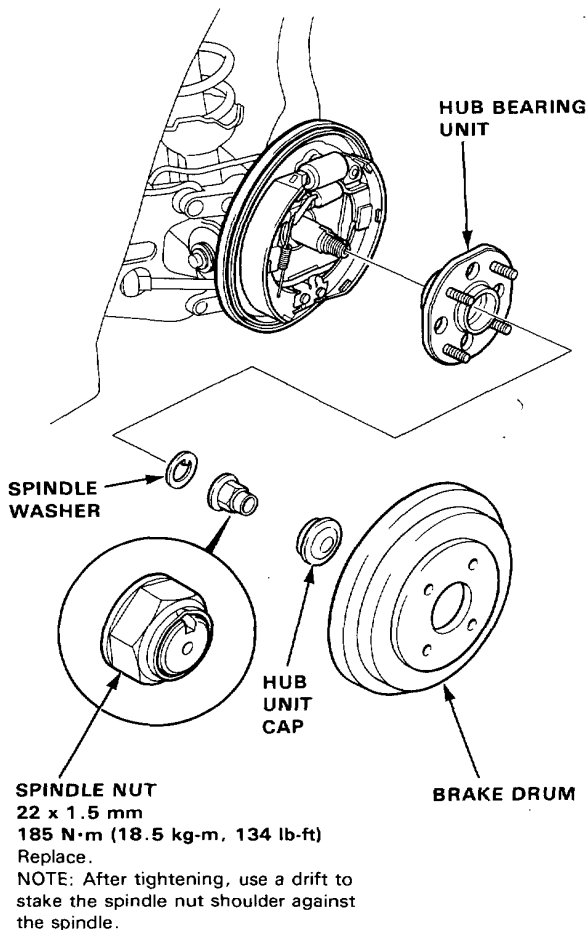


Hub Bearing Unit Replacement -2WS

1. Raise the rear of car and support it with safety stands in proper locations.
2. Remove the rear wheel.
3. Remove the brake drum.
Rear Disc Brake:
— Remove the rear brake caliper and brake disc.
4. Remove the hub unit cap, then pry the spindle nut lock tab away from the spindle and loosen the nut.
5. Remove the hub bearing unit.

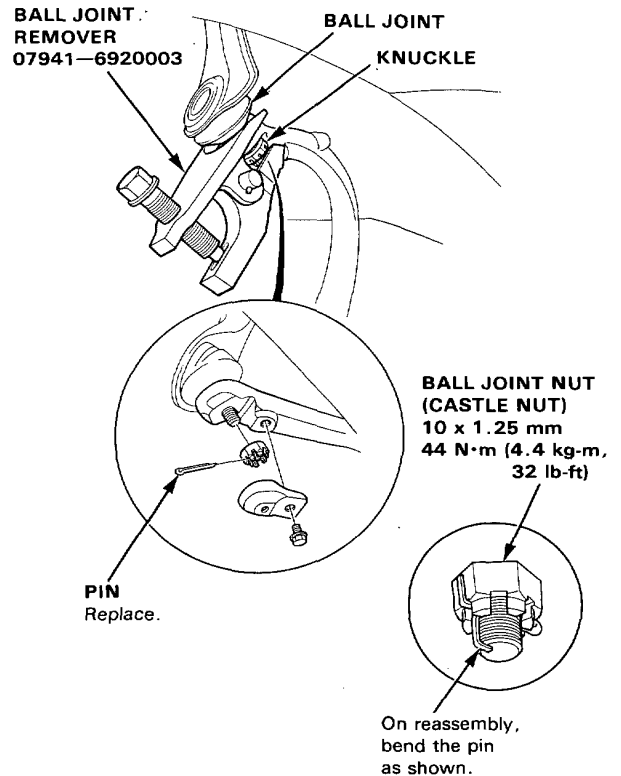


6. Install in the reverse order of removal. Tighten the new spindle nut to specified torque, then stake the nut.

Upper Arm Ball Joint Removal -2WS

1. Remove the cotter pin and loosen the upper ball joint nut half the length of the joint threads.
2. Position the special tool between the knuckle and upper arm as shown, and remove the knuckle from the upper arm.

CAUTION: Avoid damaging the ball joint boot.

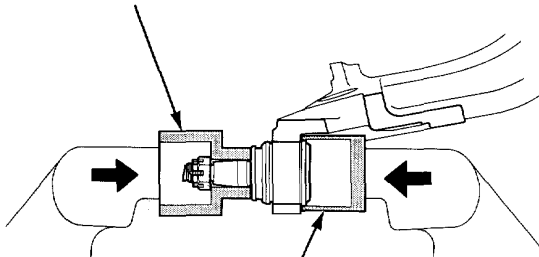


Rear Suspension

Lower Ball Joint Replacement-4WS

1. Remove the knuckle (page 12-31).
2. Remove the boot by prying the snap ring off.
3. Remove the 40 mm circlip.
4. Install the Ball Joint Remover/Installer on the ball joint and tighten the ball joint nut.
5. Position the Ball Joint Remover Base over the ball joint as shown below, then place the assembly in a vise. Press the ball joint out of the knuckle.

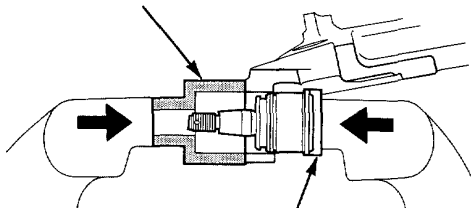
BALL JOINT REMOVER/INSTALLER
07HAF-SF10110



BALL JOINT REMOVER BASE
07HAF-SF10130

6. Place the new ball joint in position by hand.
7. Install the Ball Joint Installer Base over the ball joint as shown below, then press in the ball joint.

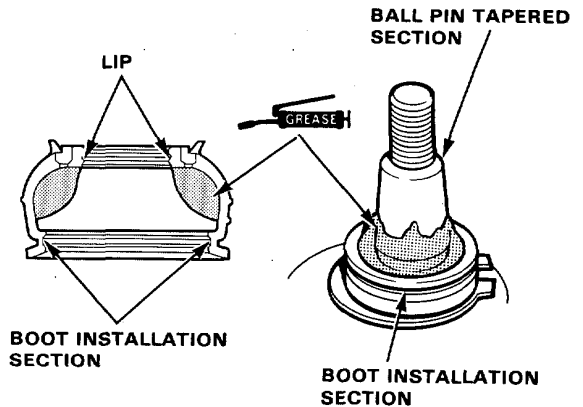
BALL JOINT REMOVER/INSTALLER
07965-SB00100



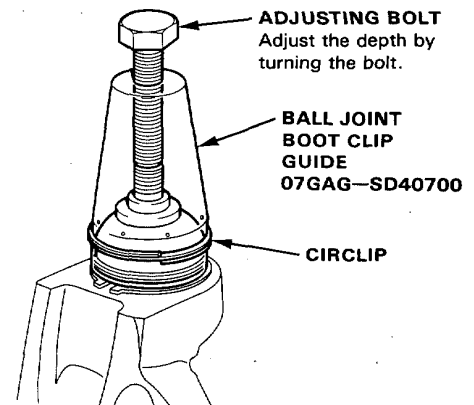
BALL JOINT INSTALLER BASE
07HAF-SF10120

Lower Ball Joint Boot Replacement-4WS

1. Remove the circlip and the boot.
CAUTION: Do not contaminate the boot installation section with grease.
2. Pack the interior of the boot and lip with grease.



3. Wipe the grease off the sliding surface of the ball pin and pack with fresh grease.
CAUTION:
 - Keep grease off the boot installation section and the tapered section of the ball pin.
 - Do not allow dust, dirt, or other foreign materials to enter the boot.
4. Install the boot in the groove of the boot installation section securely, then bleed air.
5. Adjust the special tool with the adjusting bolt until the end of the tool aligns with the groove on the boot. Slide the clip over the tool and into position.



CAUTION: After installing the boot, check the ball pin tapered section for grease contamination and wipe it if necessary.